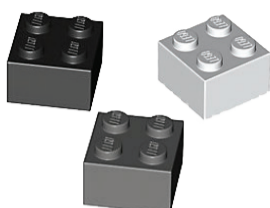


LEGO MINING




1. Choose the right lego bricks and build a rock.

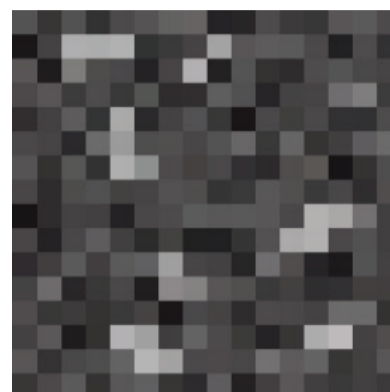
LEGEND



Rock forming minerals



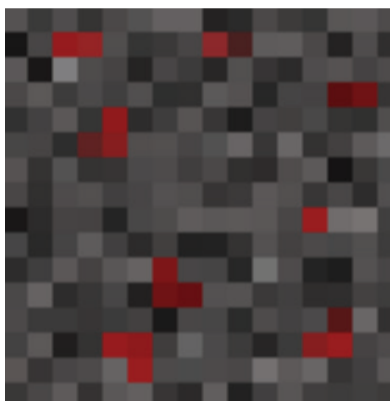
Ore minerals



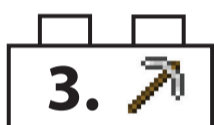
Place your rock here.



2. Add red lego bricks to the rock and build an ore.



Place your ore here.



3. Watch a video on mining in Minecraft.



4. One lego brick weighs 100 g. Build a 1,6 kg heavy ore. How many lego bricks do you need? Use all the red lego bricks that you got in a special bag.



5. What proportion of ore minerals have you incorporated into your ore? Help yourself with the squares below. All ore minerals should be in one box inside the squares.



6. What is the price of your ore if 100g of ore mineral costs 50 cents?
